



# PPC-84Tx and GmsCE



## Start-up Manual

## Table of contents

- 1 GENERAL.....2**
- 2 DETERMINE CURRENT PROGRAM VERSION ..... 2**
- 3 SELECT VERSION ..... 3**
  - 3.1 Version 1.x ..... 3
  - 3.2 Version 2.x ..... 3
- 4 START-UP WITH 1.X..... 3**
  - 4.1 Failed to initialize parameter ..... 3
  - 4.2 Select the CEC unit ..... 3
  - 4.3 Select System ..... 4
  - 4.4 First startup ..... 4
- 5 START-UP WITH 2.X..... 5**
  - 5.1 First startup ..... 5
  - 5.2 Restore system ..... 5
  - 5.3 First startup ..... 5
- 6 CONTACT..... 5**

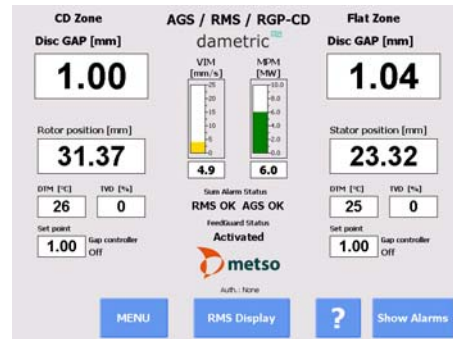
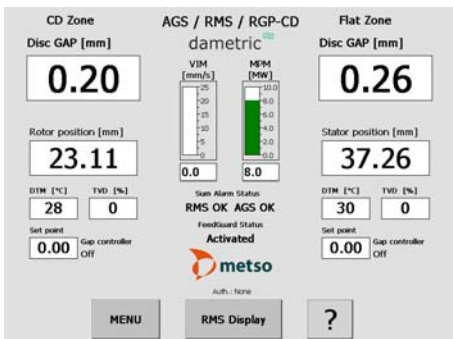
### 1 General

This Panel-PC is prepared to run with two different program versions, 1.x and 2.x. The user must select which program version to use when the Panel-PC is configured for the first time. It is important that the user selects the same version that is initially installed in the RMS/GMS system. This manual will guide the user to start up the Panel-PC, step-by-step.

### 2 Determine current program version

Version 1.x uses only grey buttons.

Version 2.x also uses blue buttons.



### 3 Select version

#### 3.1 Version 1.x

If you are running on version 1.x, then activate the “Install version 1.x” button.

- The 1.x program files are copied.
- When prompted, turn off the power to the Panel-PC. Then turn it on again after a few seconds.

Proceed to paragraph 4.

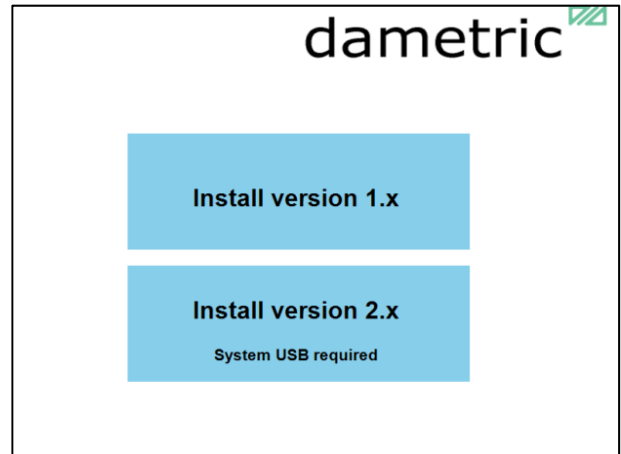
#### 3.2 Version 2.x

For 2.X users, mount the system USB memory and then press the “Install version 2.x” button.

Note, this button is deactivated (light blue) if the system USB memory is not installed.

- The 2.x program files are copied.
- When prompted, turn off the power to the Panel-PC. Then turn it on again after a few seconds.

Proceed to paragraph 5.



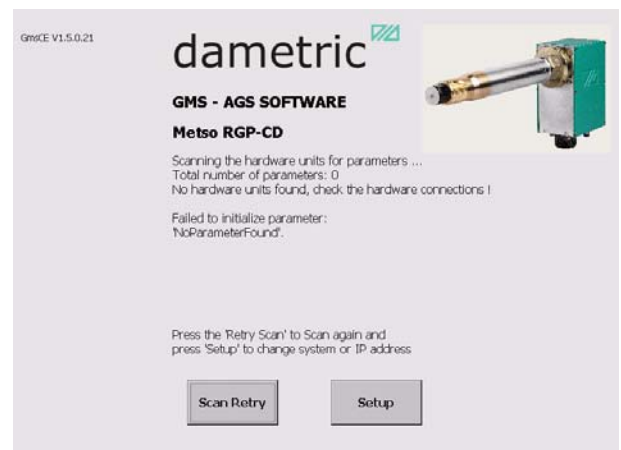
### 4 Start-up with 1.x

#### 4.1 Failed to initialize parameter

This message is displayed due to the system is not yet set-up properly.

- Press the “Setup” button to reach to the system settings.

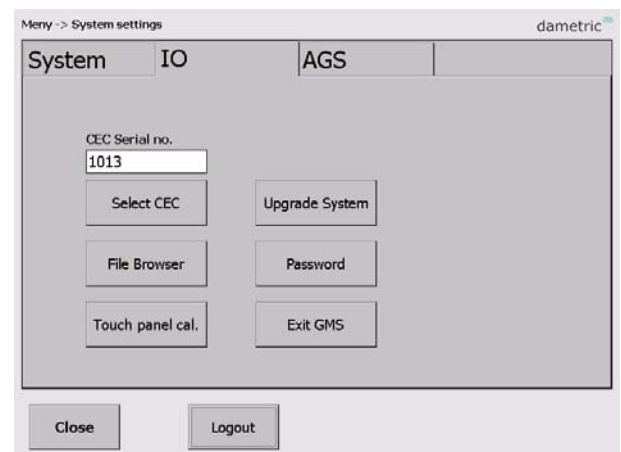
We must first set up the connection between the Panel-PC and the CEC-unit. The CEC (Can to Ethernet Converter) is the interface between the Ethernet (UDP) on the Panel-PC and the CAN bus from the hardware units.



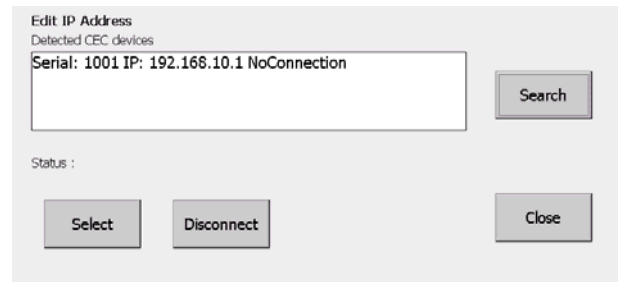
#### 4.2 Select the CEC unit

The CEC selection is stored in an XML-file in the computer and is read automatically when the system starts. The connection has to be manually set-up if the computer or the CEC is changed.

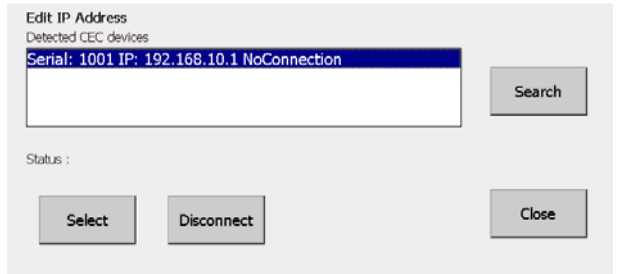
- In System Settings, select the IO tab.
- Press the ‘System Settings’ button, select the ‘IO’ tab.
- Press the ‘Select CEC’ button.



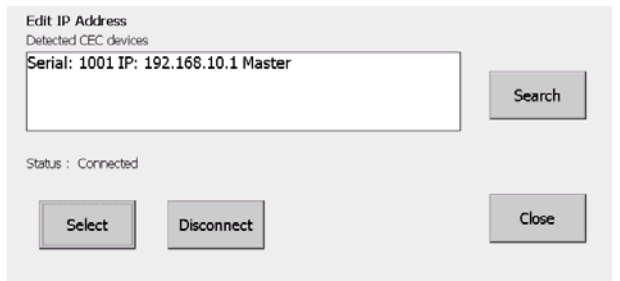
- Press the ‘Search’ button. At least one CEC unit should be shown. If more than one CEC, check the serial number for identification.



- Tap the CEC unit in use and then press the ‘Select’ button.



- Press ‘Close’.



### 4.3 Select System

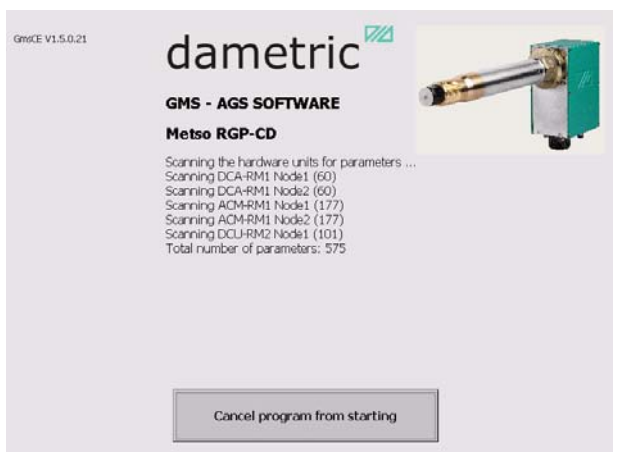
- Select the System tab.
- Log in with the administrator password (4711).
- Tap the system tab.
- Select the desired RMS or GMS system.
- Press Close.
- Turn off the power to the Panel-PC and turn it on again a few seconds later.



### 4.4 First startup

The system will start with reading the parameters from the hardware units. This takes 1-3 minutes depending of the system in use.

Then the basic display is shown and the start-up procedure is completed.



## 5 Start-up with 2.x

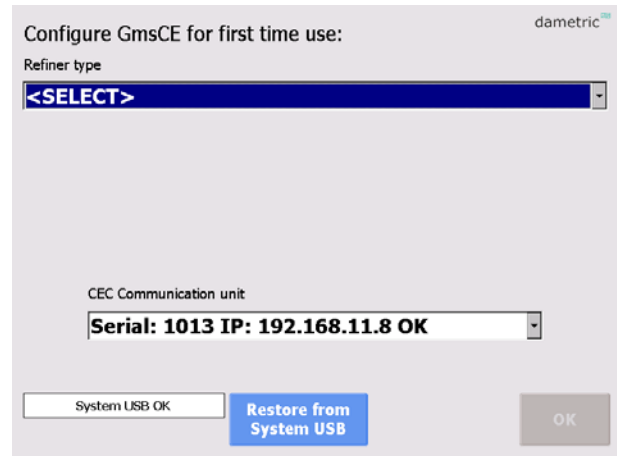
The version 2.x uses a system USB memory for the backup of files and parameters. This startup is based upon that the previous system is properly backed up on this memory.

### 5.1 Configure

In version 2.x, the CEC-unit is selected provided there is only one CEC-unit found. Otherwise, select the CEC in use by identifying the serial number.

### 5.2 Restore system

Press the “Restore from System USB”.  
A warning message is displayed showing the date of the previous backup.



### 5.3 First startup

The system will start with reading the parameters from the hardware units. This takes 1-3 minutes depending of the system in use.  
Then the basic display is shown and the start-up procedure is completed.



## 6 Contact

Development, production and service:

### Dametric AB

Jägerhorns Väg 19, SE-141 75

Phone: +46-8 556 477 00

E-mail: [dametric@dametric.se](mailto:dametric@dametric.se)

Kungens Kurva, Sweden

Telefax: +46-8 556 477 29

Homepage: [www.dametric.se](http://www.dametric.se)

dametric 