



GmsWin AGS Service

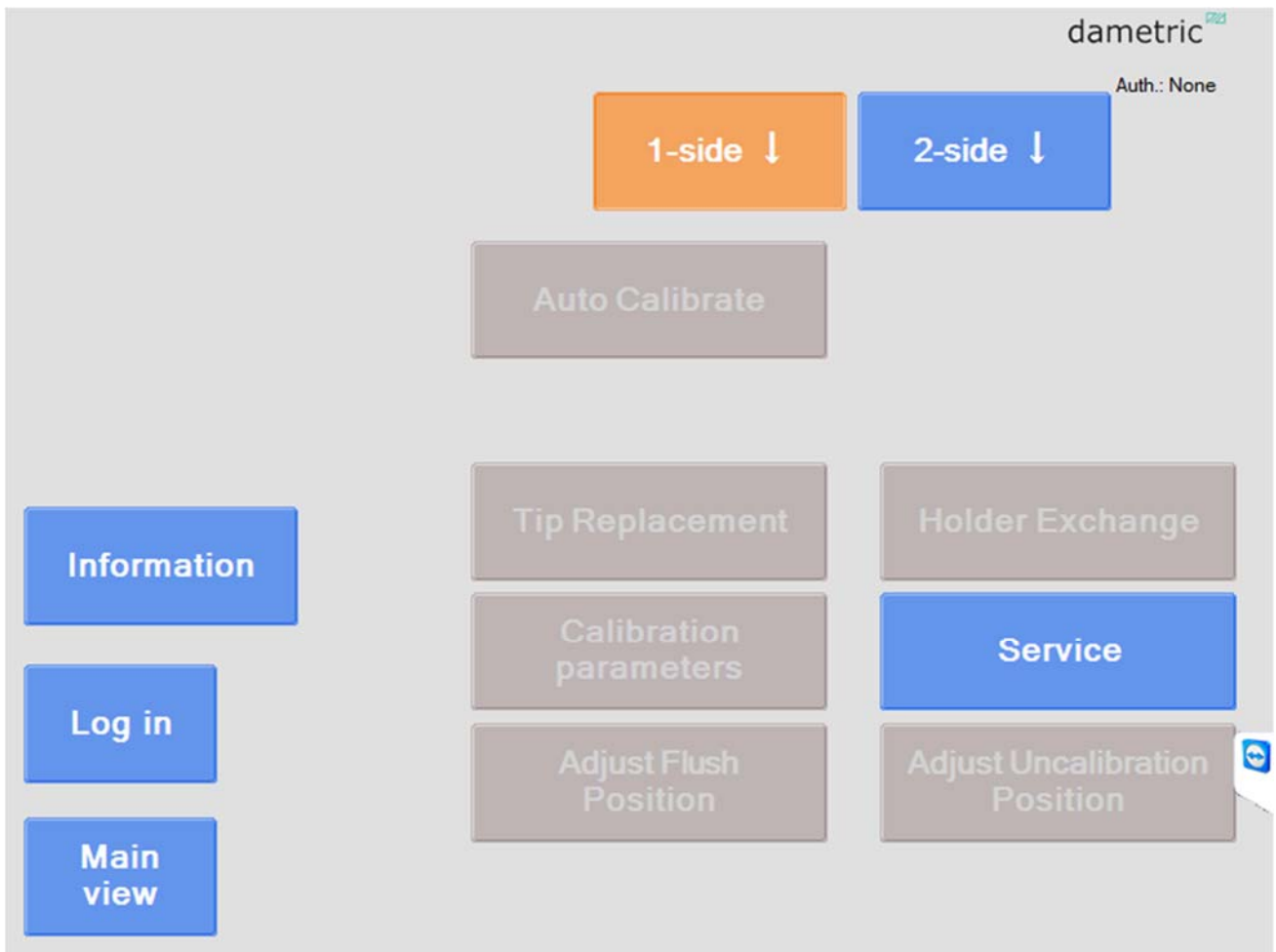


Table of contents

1	AGS SERVICE	3
2	AGS SERVICE FORM	3
3	AUTO CALIBRATE	5
3.1	Calibration information	5
3.2	Auto Calibrate	7
3.3	The text boxes.....	7
3.4	The buttons	7
3.5	Calibration logic.....	8
3.6	Auto calibration procedure	8
3.7	Calibration log	10
3.8	TDC Mode.....	10
4	TIP REPLACEMENT	11
5	HOLDER EXCHANGE	12
6	CALIBRATION PARAMETERS	13
7	SERVICE	14
8	ADJUST FLUSH POSITION	14
9	ADJUST UNCALIBRATED POSITION	15
10	COARSE CALIBRATE	16
11	CONTACT	16

1 AGS Service

This manual describes how to calibrate and to service the parts of the AGS Sensor.

2 AGS Service form

The AGS service form is reached by pressing the **MENU** button from the normal display form.

The layout of this form will change depending of the refiner type.

- **Reset Calibration Notification**

Press this button if you wish to clear the notification without recalibrating the AGS

- **Information**

The button presents a descriptive text on the screen.

- **Login / Logout**

The presence of the buttons in this form is determined by the authorization level (login code) and the calibration status.

The “*Operator*” level of login will allow the user only to do the **Auto Calibrate** function. The “*Service*” level will disable the **Auto Calibrate** but enable the other service buttons.

The “*Administrator*” level will allow all functions but must, of course, be used with more knowledge and understanding of the system.

- **Main view**

Tap to return to the main view.

- **1-side/2-side.**

These buttons are only shown if the system includes two AGS sensors. Select side by pressing one of the buttons. Active side is orange.

- **Auto Calibrate**

Start the autocalibration of the tip.

- **Tip Replacement**

Press to do an exchange of the measuring tip.

- **Holder Exchange**

Select this button if the exchange the AGS holder or AGS head.

- **Calibration parameters**

This button is showed if logged in as “*Service*” and is used to show and edit the calibration parameters. The calibration related parameters are shown with a short description and the allowed range settings. To alter a parameter, do like this:

Select the parameter by marking its name (a description of the parameter is shown at the top of the screen).

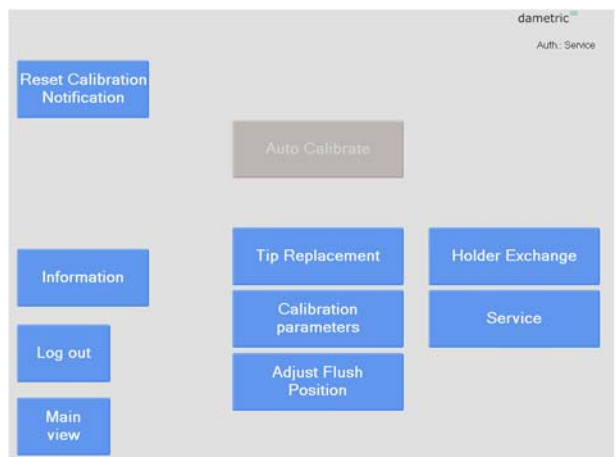
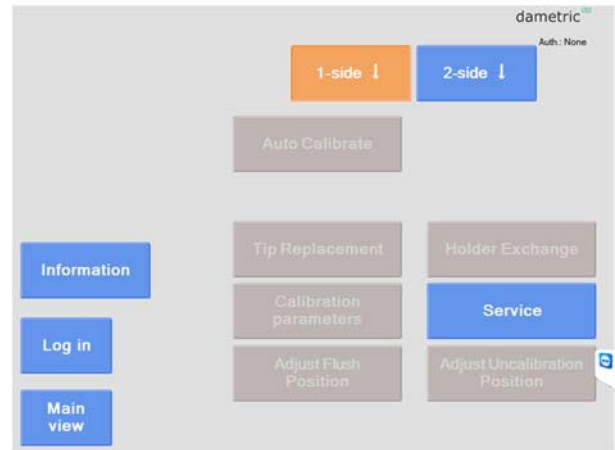
Press the **EDIT** button and a new window with a key pad is shown.

Enter the new value by using the key pad on the screen. Press the **SAVE** button. The program will give a warning if the entry is forbidden.

See section 0 for parameter descriptions.

- **Service**

Start the service panel functions.



- **Adjust flush position**
The tip can be aligned with the stator plates (not shown for all sensor types).
- **Adjust uncalibrated position**
A manual mode to calibrate the AGS tip to increase the indicated value (not shown for all sensor types).

3 Auto calibrate

3.1 Calibration information

This section describes the process of calibrating the TDC measuring tip in an AGS-sensor (AGS = Adjustable Gap Sensor).

The calibration is fully automatic and will gently move the tip toward the rotating rotor until the touch-point is detected. A detected touch-point will stop the movement and save the actual value of the TDC. The tip is then moved backward within some tenths of a second to minimize the time that the tip is touching the rotor. It is moved backward to a span position which normally is 1.0 mm from the touch-point position. The system saves the span value of the TDC and then moves the tip to the normal position (aligned with the stator plates) or to a position further out to save the TDC value at the linear check position.

These positions depend on the calibration type, idle or prod (production) and if the sensor is not calibrated in idle mode, an idle calibration must be performed first. Once the idle calibration is performed and accepted, the system will always suggest that the production calibration is used.

The production calibration is done recurrently to recalibrate the tip as the tip wears and due to that the shape of the rotor plates wear. The time between calibrations will depend on the process and the normal wear of the plates. We suggest a calibration once a week until proven that the change is so small that the time can be increased.

The AGS sensor holds the calibration status and then controls which calibration type that is allowed.

3.1.1 Reference edge

In most refiner types, the distance between the tip and the supporting edge matches the groove in the stator plate so the tip is sufficiently aligned with the plate when the AGS sensor is mounted. For some refiner types, the tip should be mechanically adjusted to a good alignment.

3.1.2 The operator

The operator's role during the calibration is to supervise the process as long as the tip is moved toward the rotor. This is the most hazardous event of the process and if doubtful, the operator presses the HALT button to stop the movement.

The calibration procedure is designed to only save the TDC values at the different positions but not to change the valid calibration. The result of the calibration and the new gap value is instead presented to the operator who will decide if to accept or to decline the calibration.

If accepted, the calibration will take effect and the gap value will be changed.

3.1.3 Interlocking

The procedure will be stopped if any of the electronic unit alarms or if the movement of the tip slips (slip alarm).

In a Valmet RGP type refiner the procedure can be interrupted by the refiner interlocking logic. A FeedGuard event or a control action by the GapGuard can also interrupt the procedure.

3.1.4 Touchpoint

The touch point is detected by measuring both the generated vibration (TVD) and the electric loop (TED) that will occur when the tip is contacting the rotor. Both methods have their own limit settings and the first detected condition will trigger the touch.

3.1.5 First calibration

The AGS must be calibrated when new plates or a new tip has been mounted. Both are usually changed at the same time to assure that the tip length and plate thickness matches.

The refiner interlocking in a Valmet RMS system must allow the plate gap to be lower than the set alarm limits. This is achieved by using the “Touch position switch” and running in local mode. Set to the on position (or CD / Flat for a CD-refiner) and move the plates together to about a 2.00 mm gap and then do an idling calibration of the tip.

The “Touch position switch” also controls the calibration type:

- activated - only idle calibration is allowed
- deactivated - only production calibration is allowed.

3.1.6 Sequential calibrations

The following calibrations are normally done in production and repetitively after a tried-out period. Maybe once a week or after a rotation change. A normal figure is that the gap change should be lower than 0.10 mm at each calibration. Consider a shorter period between calibrations if the change is higher.

3.1.7 Gap controller blocking (only systems with GMS/RMS gap control)

The gap controller in the GMS/RMS system is blocked during the calibration. The GapGuard and the FeedGuard are however active. It means that if the GapGuard or the FeedGuard is tripped, the calibration is stopped and the tip will return to the home position. Try again later.

You will be prompted if the gap controller is working when you try to start a calibration. Try again a couple of seconds later.

3.1.8 Plus/plus-plus logic (only Valmet RMS System)

It not allowed to calibrate in remote mode with the plus/plus-plus logic active. Since the gap value might change when the tip is moved toward the rotor, it might just pass one of the plus or plus-plus limits resulting in a rotor or stator position change. We want the rotor and stator to maintain in the same position during the calibration or otherwise the calibration result will be faulty.

3.1.9 Production stability blocking

If the temperature (DTM), rotor position, or stator position change more than a user-selected amount, the calibration will be halted. Depending on which node is calibrated, either rotor position, stator position or both are used. In a CD-system both positions are used.

3.1.10 Production stability

We advise that the operator checks the production stability before the calibration is executed. Open the trend form and watch the plate gap. If the gap is stable, go on with the calibration.

In case of an unstable gap with large fluctuations, consider to first lower the production to get a stable signal and then perform the calibration.

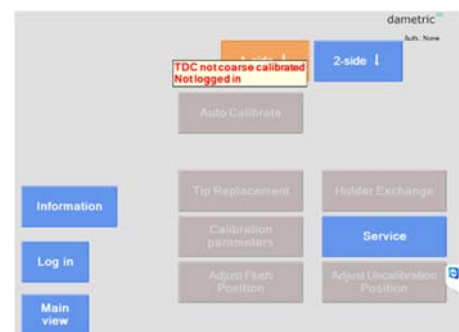
3.1.11 AGS calibration allowed

If calibration is not allowed due to “TDC not coarse calibrated” the sensor must first be coarse calibrated.

The coarse calibration flag is lost and the user should do a new coarse calibration.

Go back and enter the Service function, scroll down to “AGS x”, select “Sensor x” and “TDC x”. Tap the Coarse Calibrate button.

The procedure is described in section 0.



3.2 Auto Calibrate

3.3 The text boxes

Text window – This window can either present the flow of the process or a live graph of the important signals during the calibration.

GAP – The gap between the plates. This will vary during the process due to it is the sum of the TDC and the APO. More variation is seen if it is the first calibration.

TDC – The distance between the tip and the rotor.

APO – The position of the tip. It is 0.00 when the tip is aligned with the stator plates.

TVD – The measured touch point vibration level.

The **FB** value indicates the TVD level within the full frequency band while the **UB** value indicates the TVD value in the upper frequency band. The TVD value in the center box is a mix of the two values and the mix can be changed a parameter.

TED – The measured electric touch point level. Will indicate “n/a” if the measurement is not enabled.

DTM – The temperature measured inside the AGS tip. A “ Δ DTM” will appear when started and indicates the relative temperature since the calibration started. If the “change” value increases rapidly during the calibration it will probably mean that something is wrong. Push the **HALT** button and find out the reason. Also, a limit can be set, causing the calibration to automatically cancel if the limit is exceeded.

Calibration Type – Indicates “PROD” or “IDLE. If allowed and shown, the operator can switch between the types by a SET button. This can be changed on some system in the AGS Parameters window.

If accepted, the new Gap value will be: – This value will appear after the calibration is completed and it is now up to the operator to accept or decline the calibration result.

3.4 The buttons

Close – press this button to close the form.

Run – The procedure is started when the button is pressed. NOTE. Supervise the process once the button is pressed and until the touch point is reached. Do NOT leave the refiner panel in this state.

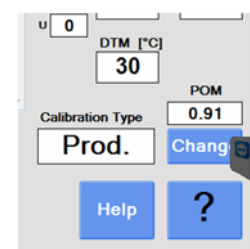
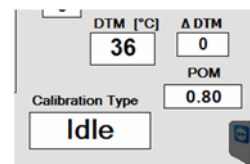
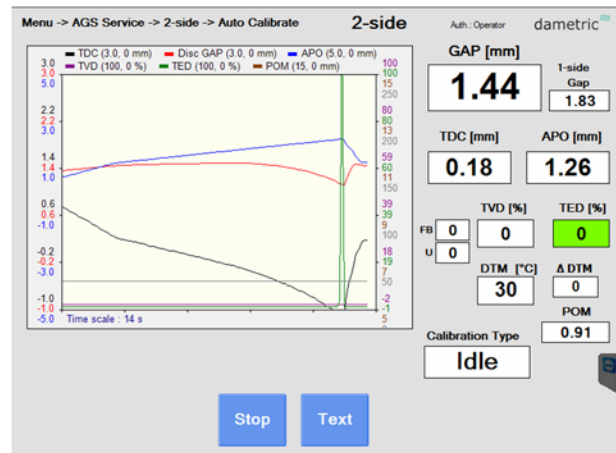
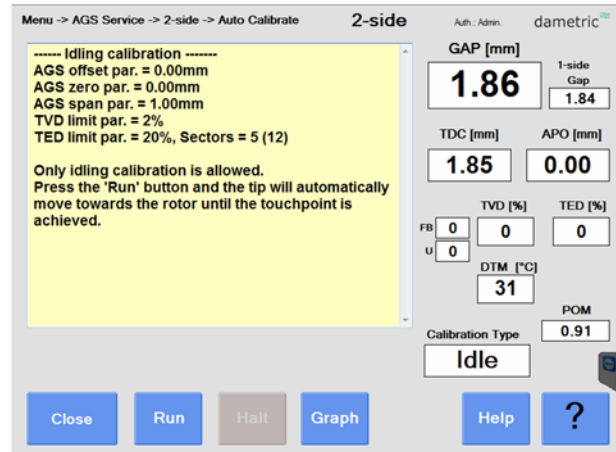
Halt – The button is seen as long as the tip is approaching the rotor. This will halt the tip movement temporarily and use the Run button to continue the movement. Once the touch point is detected the button will be hidden.

Stop – The STOP button is shown after that the touch point has been detected. If pressed now, the procedure will be stopped and the tip will return to the home position.

Help – Opens a HTML document describing the calibration procedure.

? – Press first this button and then a text box or a button and an explanatory text will appear.

Change – switches between idle and production calibration if allowed.

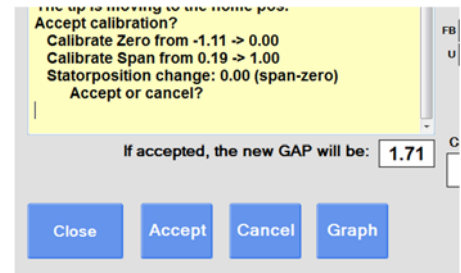


The following buttons will appear later in the procedure:

Accept – Press this button if to accept the calibration result. See the “new Gap value” to check what the new gap value will be if the result is accepted.

Cancel – Select this alternative if the calibration result is not within reason.

See later in this manual how to determine if to accept or to cancel the calibration result.



3.5 Calibration logic

The AGS-sensor and sensor amplifier (DCA or DCM) share the calibration status of the sensor. This interlocking occurs after a new AGS tip has been installed.

- Coarse calibration. A coarse calibration procedure is included in the tip exchange procedure and must therefore be performed prior to the start of the refiner. Once coarse calibrated this is not usually never done again during the lifetime of the AGS tip.
- Idle calibration. This calibration requires that the tip is coarse calibrated. The idle calibration is acknowledged first after it has been accepted by the operator. In Valmet RGP-refiners, a digital output is triggered enabling that the refiner can be set in production.
- Production calibration. This calibration can be performed after the idle calibration has been accepted. A production calibration is performed periodically to eliminate signal change due to wear of the segment surface and the AGS tip. The intervals between calibrations depends of the plate wear and can be from a couple of days to a couple of weeks. A normal time is 14 days.

3.6 Auto calibration procedure

This item describes the flow of the procedure.

3.6.1 Start requirements

The procedure can not start until some requirements are fulfilled. The first requirement that is not fulfilled will appear in the information text.

- *“The AGS cannot be calibrated due to a step motor slip alarm. Go back to the main menu and the alarm will be cleared.”*
The movement of the tip has slipped causing a slip alarm. Step back to the normal display form and the slip alarm will be cleared automatically. Then try again.
- *“The calibration cannot start due to that the TVD level is too high (more than 75% of the cal. limit). Wait for a lower production level or check the settings.”*
The TVD level is too high. The touch point is based upon a drastic change in the TVD level and if the start level is too high, the required change is not possible. Lower the production level or raise the TVD level for touch point (use the Parameters button from the AGS Service form.
- *“The calibration cannot start due to that the TED level is too high (more than 75% of the cal. limit). Check the settings.”*
The TED level is too high relative the limit parameter. The TED value is heavily affected by chemicals in the process and also dependent of the insulating layer around the AGS tip. Increase the limit parameter or in worst case, disable the TED from the touch point detection by setting the limit parameter to zero.
- *“The calibration cannot start because the TDC value is out of its calibration range (> 2.50 mm). Adjust by moving the rotor closer!”*
The Gap value is higher than 2.50 mm. Close the plate gap so it is lower than 2.00 mm.
- In RMS-systems the idle/production selection is controlled by the PLC/DCS.

3.6.2 Idle calibration

The calibration logic will force the system to select the idle calibration if this is not done previously. In Valmet GMS/RMS systems, the signal “Touch Position” must be enabled.

- The procedure is started when the Run button is pressed.
- The tip is moved toward the rotor.
The TVD and TED levels are increasing and when the tip starts to hit the rotor and when a calibration limit is passed, the touch point is established. The system stores the TDC value as a zero-calibration value.
- The tip is then moved out to the span position. This is the difference between the zero and span calibration parameters and is normally 1.00 mm. The speed of the tip is 0.25 mm/s so this takes about 4 seconds. The system will store the TDC value as the span calibration value after the TDC values has stabilized.
- The tip then moves to the linear check position which is the distance as the difference between zero and span positions. The TDC value is then stored.
Finally, the system will move the tip to the normal position which is aligned with the stator plates.
- The result of the calibration is presented to the operator as soon as the tip is in normal position. The operator decides if to **accept** or **cancel** the calibration.
The calibration result can be changed drastically if this is the first idle calibration after a coarse calibration, so the normal step is to accept the calibration.
- The system will then present the result of the calibration.
- The calibration is then completed and the result can be seen in the **Calibration Log** which can be started from the **Menu** form.

3.6.3 Production calibration

The AGS must first be idle calibrated before a production calibration can start.

In Valmet RMS systems, the signal “Touch Position” must be disabled.

- The procedure is started when the Run button is pressed.
- The tip is moved toward the rotor. The movement speed is determined of the measured TDC value and the touch point vibration value.
The TVD level is increasing when the tip starts to hit the rotor and when the TVD calibration limit is passed, the touch point is established. The system stores the TDC value as a zero-calibration value.
The system will force a touch point if the TDC is less than -0.10 mm. This is a safe method to save the tip if, for instance, the TVD signal is lost without an alarm. This is noted in the text box if it happens. The calibration needs to be repeated until a valid touch point is achieved, if the forced touch point was not caused by a malfunctioning TVD.
- The tip is then moved out to the span position. This is the difference between the zero and span calibration parameters and is normally 1.00 mm. The speed of the tip is 0.25 mm/s so this takes about 4 seconds. The system will store the TDC value as the span calibration value after the TDC values has stabilized.
- Finally the system will move the tip to the normal position which is aligned with the stator plates.
- The result of the calibration is presented to the operator as soon as the tip is in normal position. The operator decides if to **accept** or **cancel** the calibration.
The calibration result should not be changed too much relative a previous idle or production calibration, so allow only small changes before the calibration is accepted.
- The calibration is then completed and the result can be seen in the **Calibration Log** which can be started from the **Menu** form.

3.6.4 Accept or Cancel

3.6.4.1 Indicators of the calibration result

The result of the calibration can be seen in the text window that will appear once the calibration is completed.

Pay close attention to the value in text box next to “If accepted, the new GAP will be:” because it will indicate what the gap will be if you accept the calibration. In the text window you can also see how much the TDC values was at the zero point “Zero value saved (TDC=0.00)” and the span point “Span value saved (TDC=1.00)”.

An example: You are running at a gap of 0.50 mm and the result of the calibration is 0.60 mm. If you accept this result, the new gap will be 0.60mm and the gap controller will soon move the plates together 0.10 mm to the set-limit value (0.50 mm).

3.6.4.2 Idle calibration

The normal way is to always accept the idle calibration results. The result of the calibration will depend of the magnetic properties of the steel in the plates and also the plate pattern. Note that the zero value can vary a great deal, values down to -3.00 mm or up to +1.00 mm can be seen.

3.6.4.3 Production calibration

Since the production calibration is a re-calibration it means that the alteration in the calibration result should be fairly low relative to the last calibration. It is normal that changes less than 0.10 mm should be accepted. If the change is too high, you can always decline and try to calibrate again.

3.6.4.4 Acceptance checks

If the production calibration results in a gap change above a user-selected limit, the calibration will not be accepted, or at least be warned for. The limit for this check can be changed in the AGS Parameters window.

3.7 Calibration log

Sometimes it is useful to see the previous calibration. Go then to the Menu form and press the Calibration Log button. The last 200 calibrations are then listed.

You can see the time and the result of the previous calibrations.

3.8 TDC Mode

In RMS systems, the user can select to run the RMS/AGS system in standard TDC mode. This is useful if there is an AGS sensor alarm that will disable the AGS calibration. The user can then do a standard TDC calibration by moving the rotor until it touches the stator plates. This prevents, of course, a calibration during production.

4 Tip Replacement

When the tip is worn out, you use this sequence driven function to change to a new tip.

Press the **Start** button to start the sequence. The progress of the sequence is shown in the yellow window.

During the sequence, you will be prompted to pull out the tip and then put in a new one. Please note the id number of the new tip because this shall be entered before the new tip is inserted.

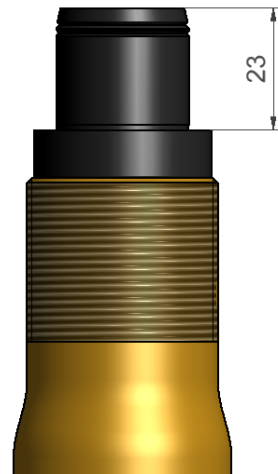
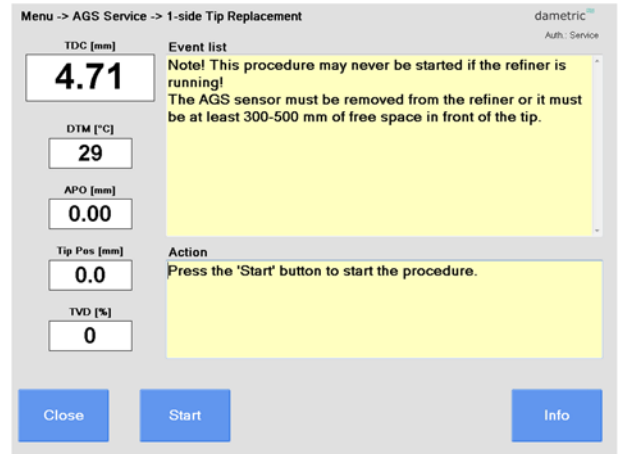
If something should go wrong it is possible to stop the sequence at any time by pressing the **Halt** button.

Please check the tip distance after the procedure is finished. The tip distance must be 23.00 (+0/-0.05) mm when a new tip has been installed. This distance will work together with a corresponding distance in the stator plate giving a tip in flush with the new set of plates.

This is the sequence order.

- Check that the locking nut between the AGS house and holder is tightened.
- Start with the 'Start' button.
- The tip is moved forward about 18 mm.
- Remove the tip by pulling it straight out.
- Feed the tip identification number into the system.
- Mount the new tip.
- Retract the new tip by moving the tip 18 mm backwards to the home pos.
- The system will perform a coarse calibration (3.80mm).
- The system will perform an APO adjustment.
- Check the 23.00 mm distance according to the figure above.

The sequence is automatic but the user must confirm every step by pushing the 'Next' button.



5 Holder Exchange

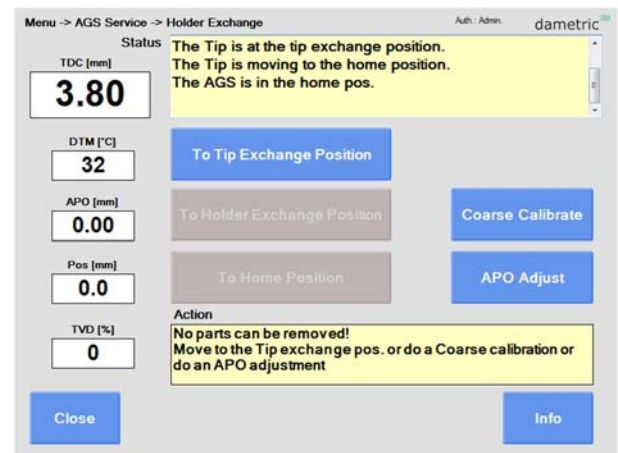
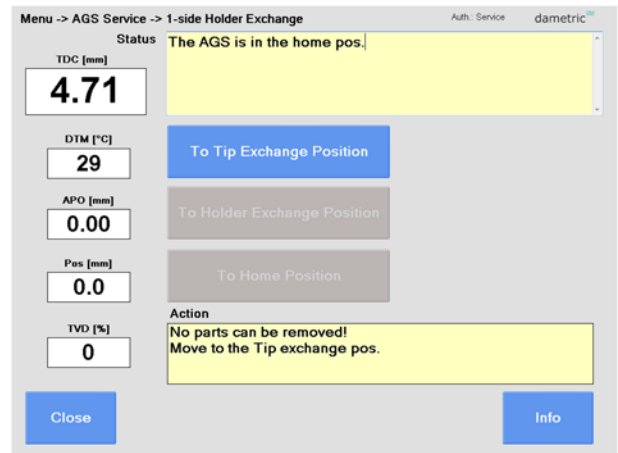
This procedure is used to replace the holder or the head of the AGS sensor.

Note. The parts must be removed in the right order. Use the buttons to position the sensor tip shaft in the positions to be able to remove the parts.

The built-in logic will help you to determine in what position you are.

- Check that the locking nut between the AGS house and holder is tightened.
- Run the AGS to the 'Tip exchange position' to remove the tip.
- When the tip is removed, run the AGS to the 'Holder exchange position'.
- Unscrew the locking nut and remove the holder.
- Mount the new holder and check the placement of the disc springs inside the locking nut. Check the AGS sensor house manual for the proper assembly.
- Fasten the locking nut with the special tool, pull tight.
- Run the AGS to the 'Tip exchange position' and mount the tip.
- Enter the tip id number when prompted.
- Run the AGS to the 'Home position' again.
- Press the “Coarse” button to do a TDC coarse calibration.
- Press the “APO Adjust” button to do the APO adjustment sequence.

The user must check the tip distance after the procedure is finished. The tip distance must be 23.00 (+0/-0.05) mm when a new tip has been installed. This distance will work together with a corresponding distance in the stator plate giving a tip in flush with the new set of plates.



6 Calibration parameters

Parameter descriptions.

Panel-PC parameters

PPC - Acceptance – Gap decrease limit

Allowed distance to decrease the GAP value as a result of the calibration.

PPC - Acceptance – Gap increase limit

Allowed distance to increase the GAP value as a result of the calibration.

PPC - Acceptance – Rotor position change

Allowed rotor position change during the calibration. Normally 0.05 mm.

PPC - Acceptance – Tip temp. increase limit

Allowed tip temperature (DTM) increase during the calibration. Normally 5 °C.

PPC - Production Calibration alarm

Generate an alarm if the AGS is not calibrated in production. Normally 0.

PPC - TDC Calibration Notification

The number of days until recommending a new TDC calibration. Typical 14 days.

PPC – Select Calibration Type

Allow any type of AGS Calibration in Production or Idle. A “1” or yes means that the operator can change type calibration type. A “0” or no means that the calibration type is controlled by the logic.

PPC - TDC Calibration Notification

The number of days until recommending a new TDC calibration. Typical 14 days.

TDC Parameters

TDC – Offset cal. value (idle)

An offset value added to the zero and span calibration parameters during idle calibration. Normally 0.00 mm.

TDC – Span cal. value

The span value used at the AGS calibration (usually 1.00 mm higher than the zero cal. parameter). Normally 1.00-1.30 mm.

TDC – Zero cal. value

The zero-value used at the AGS calibration. Normally 0.00-0.30 mm.

TED = Touchpoint Electric Detection parameters

TED – Numbers of sectors for touch

The number of sectors (1-12) to determine the TED touchpoint. This is linked to the TED limit parameter (both idle and prod.). For touch – the TED value must be higher than the limit in at least the specified number of sectors). Normally 3 sectors.

TED – Touch limit level, idle (electric)

The TED limit to determine the TED touchpoint in idle calibration. This is linked to the TED sector parameter. Normally 20 %.

TED – Touch limit level, prod (electric)

The TED limit to determine the TED touchpoint in production calibration. This is linked to the TED sector parameter. Normally 20 % but set to 0 (deactivated) if chemicals are added.

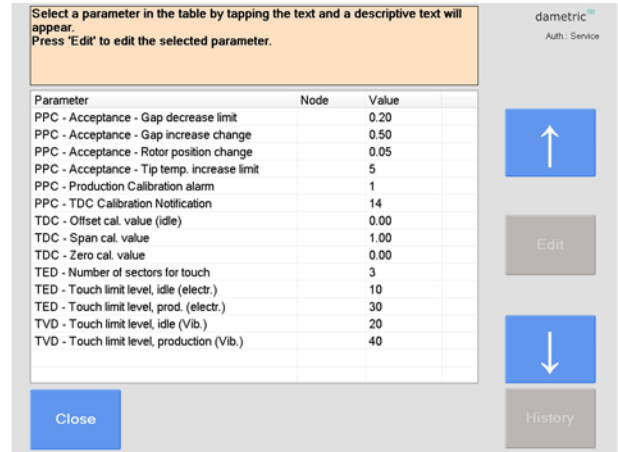
TVD = Touchpoint Vibration Detection parameters

TVD – Touch limit level, idle

The TVD limit to determine the touchpoint in idle calibration. Normally 20 %.

TVD – Touch limit level, production

The TVD limit to determine the touchpoint in production calibration. Normally 50-70 %.



7 Service

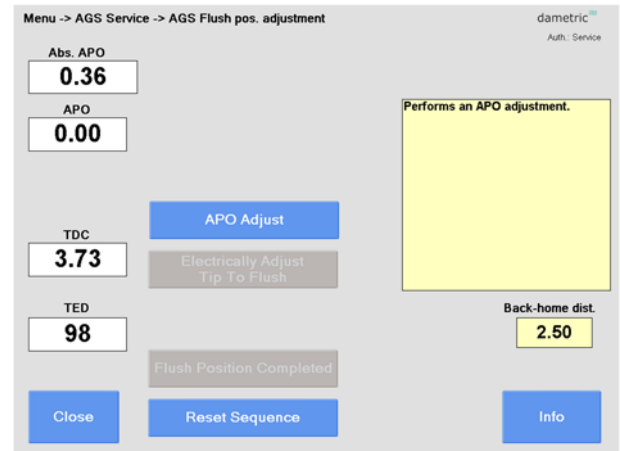
This is a shortcut to the service-panel functions which are used to detect and service alarms in the GMS/RMS system.

8 Adjust Flush Position

This procedure is mainly used with AGS sensor types without a fixed segment edge of 23.0 mm behind the wear plane.

The purpose with this function is to align the AGS sensor tip to the wear plane of the stator plates. Use this after each plate change and tip change. The tip is first mechanically aligned within 0.20 mm end then electronically aligned to zero fault.

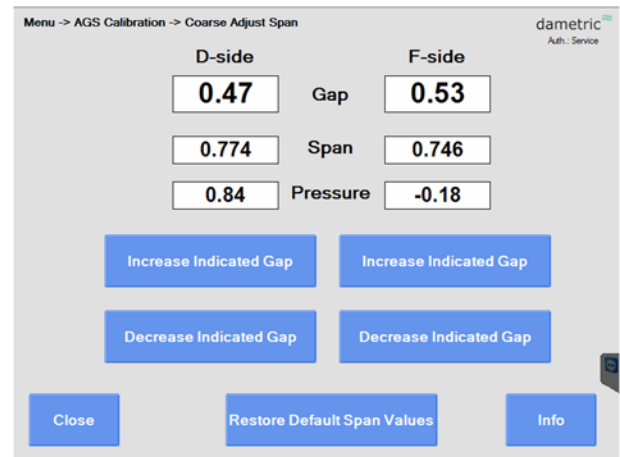
- Press the 'Adjust flush pos. ' button.
 - Press the 'Clear APO' button to remove previous offset adjustment
 - Press the 'To APO=0' button to move the tip to the home position (APO = 0.00). This will move the tip slightly (normally less than 0.25mm).
 - Mount the AGS sensor and align the tip within 0.2mm with the wear surface of the plates.
 - Tighten the locking nut of the AGS sensor.
 - Use the 'Move tip' buttons to align the sensor with the plates.
- The TED function can be used (if activated) to measure the alignment by placing a steel ruler on the plates. The TED-value will reach 100% when the tip touches the ruler. Then, back off another 0.02mm from this position.
- Without the TED, use a ruler and a feeler gauge to measure the alignment.
- The Tip movement can be changed with the +/- buttons
- When the tip is fully aligned, press the 'Set APO to Flush' button.
 - Close the window and log out.



9 Adjust uncalibrated position

This function is only used in refiners where the rotor or stator cannot be moved under control. The intention is to start up the refiner in stable production and then change the span calibration to increase or decrease the indicated gap.

- **Increase Indicated Gap**
Press the button to increase the gap (for the selected zone).
- **Decrease Indicated Gap**
Press to decrease the gap.
- **Restore Default Span Values**
The default span value is restored.
- **Info**
A short description is shown.



10 Coarse Calibrate

As mentioned earlier the coarse calibration is performed in the tip exchange procedure. Once calibrated – never do it again unless necessary.

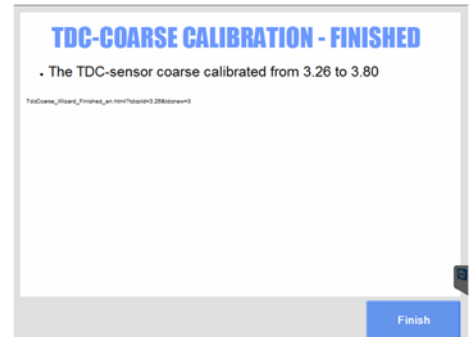
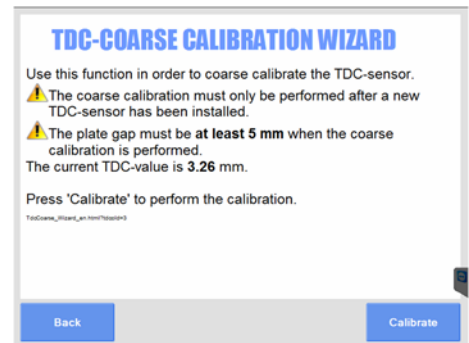
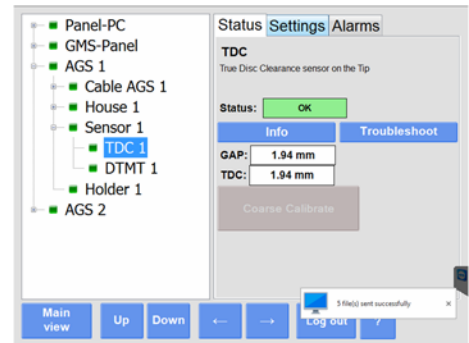
Note! The plates must be move far apart, > 6 mm, and never apply any magnetic material in front of the sensor when doing a coarse calibration.



No magnetic material in front of the sensor!

To do a manual coarse calibration:

- Open the Service functions.
- Tap and expand the “AGS x”.
- Tap and expand the “Sensor x”.
- Tap the “TDC x”.
- Log in with the service code.
In case it is already calibrated – log in with the administrator code.
- Now, be sure that you can force a new coarse calibration at this stage. A coarse calibration will overwrite the previous (if any) idle and production calibrations.
- Press the **Coarse Calibrate** button.
- Check the warning text.
- Press **Calibrate**.
- The result of the calibration is shown.
- Click **Finish** to return.



11 Contact

Sales, development, production and service:

Dametric AB

Jägerhorns Väg 19, 141 75 Kungens Kurva, Sweden

Phone: +46-8 556 477 00

Telefax: +46-8 556 477 29

E-Mail: service@dametric.se

Website: www.dametric.se

dametric 