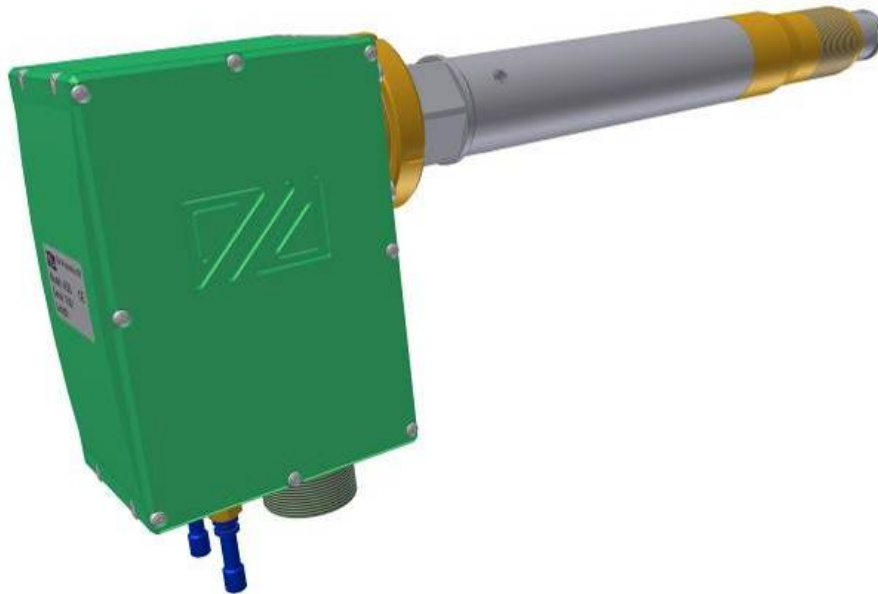


AGS Sensor

MOUNTING / DISMOUNTING



dametric 

Content

1	General	2
2	Mounting	2
3	Dismounting	3
4	Locking nut	3
5	Grease	3
6	Cable connection	4
7	Contact	4

1 General

This manual describes how to mount and dismount the AGS sensor into the refiner.

Please, follow the instructions to avoid unwanted stoppage time due to broken parts.

The electrical cable must be attached to the sensor during the operation to enable the holding torque of the measuring tip.

This description only handles the operation of mounting and dismounting while other manuals handle the service of the AGS and the tip exchange procedure.

2 Mounting

- Grease the thread of the holder. See later in the manual for more details.
- Check that the electrical cable is connected to the AGS sensor and that the power is applied to the RMS system.
- Loosen the locking nut between the holder and the house one turn to make it easier to turn the holder.
- Insert the AGS holder into the refiner.
Hold the AGS house still and use the special tool to thread the AGS holder into the segment holder and until it hits the segment plate.
DO NOT pull to tight (< 50Nm or 36ftlbs); excessive force will damage the brass edge in the holder with the result that the sensor is not aligned with the stator plate. The tip will then protrude into the refining zone which will give a relatively lower gap reading.
Do NOT disconnect the cable and turn the whole AGS head around.
- Tighten the locking nut between the holder and the AGS house.
- Tighten the bolts of the sealing plate (if existing).



3 Dismounting

- Check that the electrical cable is connected to the AGS sensor and that the power is applied to the RMS system.
- Loose the bolts of the sealing plate (if existing).
- Loosen the locking nut between the holder and the AGS house one turn to make it easier to turn the holder
- Hold the AGS house still and use the special tool to thread the AGS holder out of the segment holder.
Do NOT disconnect the cable and turn the whole AGS head around.
- Insert the AGS holder into the refiner.
Hold the AGS house still and use the special tool to thread the holder into the segment holder.

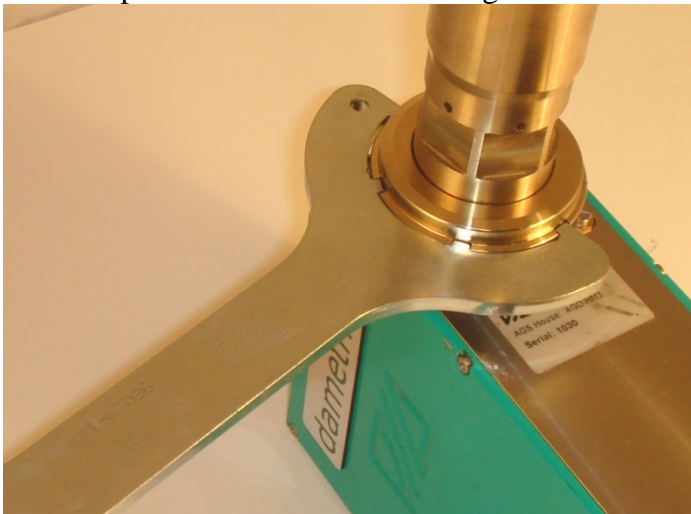
4 Locking nut

The locking nut locks the holder to the AGS house.

It is essential that it is fully tightened while in operation. The nut can be loosened slightly (1-2 turns) to lower the friction when threading the holder into or out from the refiner house.

Remember to always tighten the nut before operation or if to change the AGS tip.

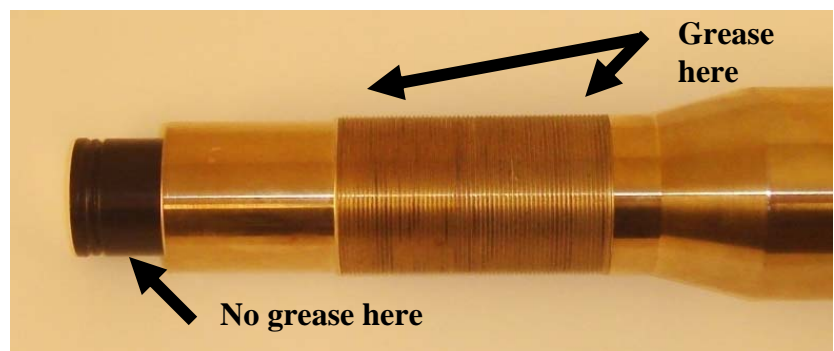
Use the special tool to turn the locking nut.



5 Grease

The thread of the holder must always be grease lubricated before the AGS is mounted. Use high temperature grease and grease the thread completely.

Do NOT apply grease on the sensor tip



6 Cable connection

The cable should always be connected to the AGS house during both the mounting and the dismounting operations. A connected cable will apply a holding torque on the moving mechanism of the AGS and prevent the tip from being moved accidentally.

7 Contact

Development, production and service:

Dametric AB

Jägerhorns Väg 19, SE-141 75 Kungens Kurva, Sweden

Phone: +46-8 556 477 00 Telefax: +46-8 556 477 29

E-mail: service@dametric.se Web site: www.dametric.se

dametric 