



GMS – AGS – TED-Setup

GMS CE Panel-PC

Manual

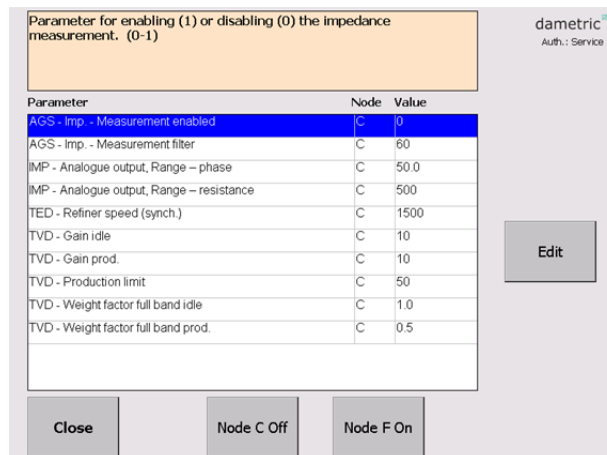


Table of contents

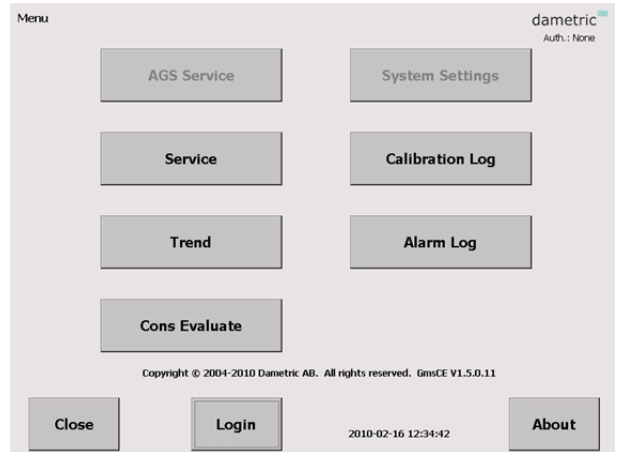
- 1 OVERVIEW2
- 2 ENABLE/DISABLE IMPEDANCE MEASUREMENT.....2
- 3 CONTACT.....3

1 Overview

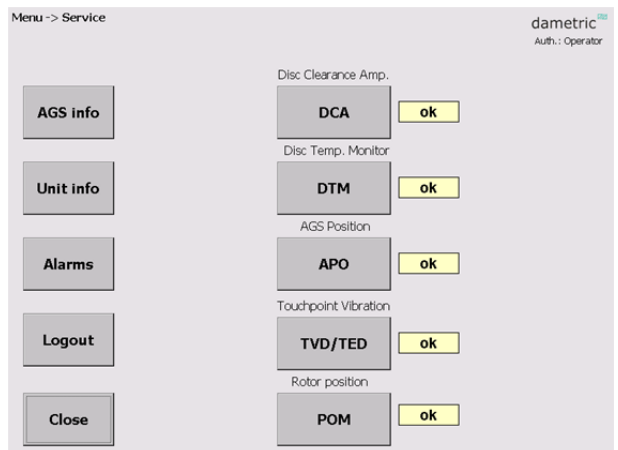
This manual is used for enabling or disabling the impedance measurement in the AGS sensor. The impedance measurement includes the TED-function which stands for Touchpoint Electric Detection. The TED is used to detect when the AGS-tip is in contact with the rotor and thereby determines the zero calibration point.

2 Enable/Disable Impedance measurement

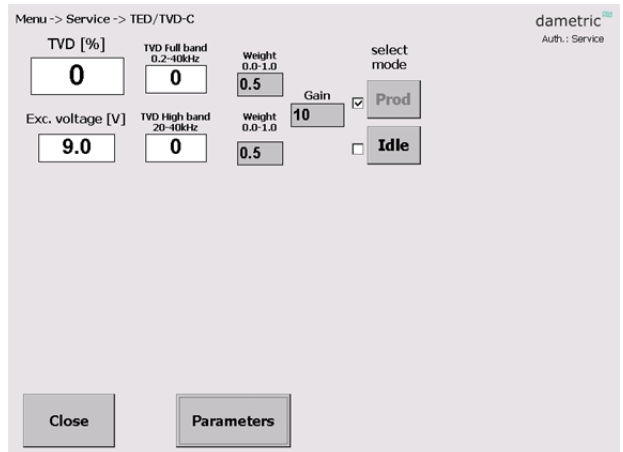
In the normal view, press the **MENU** button.
 Press the **Login** button and dial the Service code, 2730.
 Press the Service button.



Service form - press the **TVD/TED** button.



TVD/TED- Service form – press the **Parameters** button.



Parameter form – tap the line “AGS – Imp. – Measurement enabled”.

Select a parameter in the table by tapping the text and a descriptive text will appear. Press 'Edit' to edit the selected parameter.

Parameter	Node	Value
AGS - Imp. - Measurement enabled	C	0
AGS - Imp. - Measurement filter	C	60
IMP - Analogue output, Range – phase	C	50.0
IMP - Analogue output, Range – resistance	C	500
TED - Refiner speed (synch.)	C	1500
TVD - Gain idle	C	10
TVD - Gain prod.	C	10
TVD - Production limit	C	50
TVD - Weight factor full band idle	C	1.0
TVD - Weight factor full band prod.	C	0.5

Close Node C Off Node F On Edit

Press the Edit button.

Parameter for enabling (1) or disabling (0) the impedance measurement. (0-1)

Parameter	Node	Value
AGS - Imp. - Measurement enabled	C	0
AGS - Imp. - Measurement filter	C	60
IMP - Analogue output, Range – phase	C	50.0
IMP - Analogue output, Range – resistance	C	500
TED - Refiner speed (synch.)	C	1500
TVD - Gain idle	C	10
TVD - Gain prod.	C	10
TVD - Production limit	C	50
TVD - Weight factor full band idle	C	1.0
TVD - Weight factor full band prod.	C	0.5

Close Node C Off Node F On Edit

Dial **0** to disable or **1** to enable the Impedance/TED measurement
Then press **OK**.

Press Close to go back to the Menu form.
Remember to logout if you leave the system unattended.

Parameter for enabling (1) or disabling (0) the impedance measurement. (0-1)

Edit parameter : ImpPEna Node1 (0)

0

1 2 3

<-- 4 5 6

Clear 7 8 9

Cancel OK - 0 .

3 Contact

Development, production and service:

Dametric AB

Jägerhorns Väg 19, SE-141 75 Kungens Kurva, Sweden

Phone: +46-8 556 477 00 Telefax: +46-8 556 477 29

E-mail: service@dametric.se Homepage: www.dametric.se

